

# Leading Transportation and Logistics Company Reduces Workplace Accidents

## Challenge

One of the world's leading freight transport businesses needed to find a way to identify people who posed a high level of risk for unsafe behavior in order to reduce safety incidents and save themselves time and money in the process.

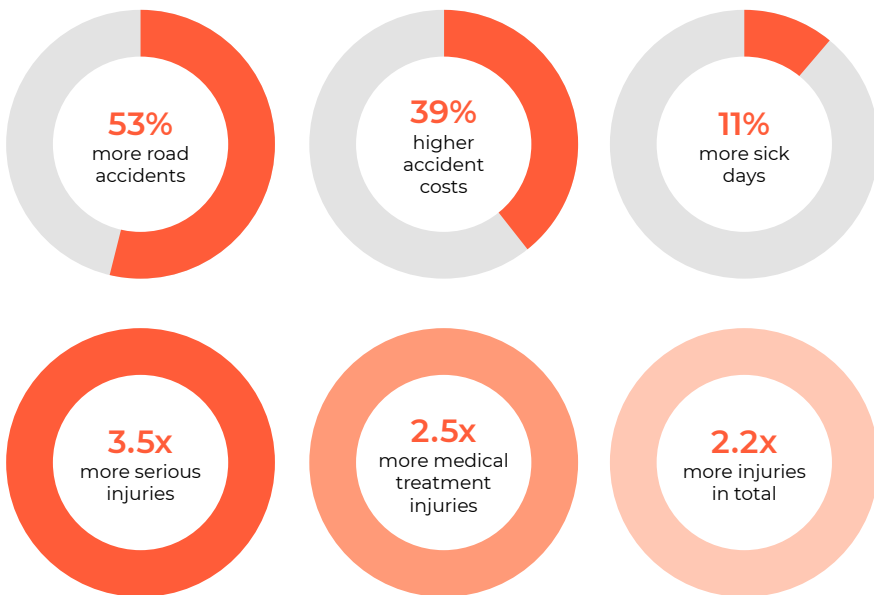
## Solution

The company completed a 12-month pilot of Criteria's Workplace Safety Profile (WSP) before rolling it out across the rest of the business. The WSP is a risk assessment that predicts the likelihood that someone may be involved in accidents or cause injury to themselves or others at work.

They assessed 152 drivers and dock workers using the WSP, and then looked at the number of actual workplace accidents, injuries, and sick days each person had experienced during that time.

## Results

Upon analyzing each employee's safety record, Criteria discovered that compared to the "low risk" employees, the "high risk" group experienced:



Adding the WSP to their recruitment process allowed the company to confidently reduce workplace accidents and injuries by screening out "high risk" candidates before they are hired.

INDUSTRY  
**Transportation and Logistics**

OBJECTIVE  
**Reduce workplace accidents and injuries**

SOLUTION  
**WSP**  
Workplace Productivity Profile

RESULTS  
**Fewer accidents and reduced costs**  
"High Risk" employees had up to 3.5x more serious injuries compared to "Low Risk" employees.

